

**Hi Chem Paint Technologies Pty.Ltd.**

A.B.N. 95 064 139 563

73 Hallam South Road, HALLAM, VICTORIA 3803.

Telephone : {03} 9796 3400

Facsimile : {03} 9796 4500

Email: [msdsinfo@hichem.com.au](mailto:msdsinfo@hichem.com.au)[www:hichem.com.au](http://www.hichem.com.au)**HAZARD IDENTIFICATION**

The product is classified as Hazardous Substance in accordance with SAFE WORK Australia – Hazardous Substances Information System {HSIS 2013} AUSTRALIA, Global Harmonised System {GHS} and Standard for the Uniform Scheduling of Medicines and Poisons (SUSMP).

**GHS HAZARDOUS STATEMENTS**

H 225	Category 2	Highly Flammable Liquid – Flash Point <23° Celsius Boiling Point – ≥ 35 ° Celsius.
H 303	Category 4	Harmful if swallowed
H 312	Category 4	Harmful in contact with the skin
H 316	Category 4	May cause skin irritation
AUH 066	Repeated exposure may cause skin dryness or cracking	
H 320	Category 2B	Causes eye irritation
H 332	Category 4	Harmful if inhaled
H 336	Category 3	May cause drowsiness and dizziness.
H 373	Category 2	May cause damage to organs.
H 413	Category 4	May cause long lasting harmful effects in the aquatic environment

**GHS PRECAUTIONARY STATEMENTS**

Statement Type	Statement 'P'	Precautionary Statement Text
General	P 101	Seek medical advice if required
Precautionary	P 102, 103	Carefully read and understand this document during application and handling period.
Prevention	P 233, 234, 235	Keep in original container and tightly closed in a cool dry place when not in use.
	P 241	Ensure all equipment and lighting is explosion proof during the application and handling period.
	P 261	Avoid breathing vapours during manufacturing and handling period.
	P 264	Wash all exposed skin and hair after application and handling period with soap and warm water.
	P 270	Do not smoke, eat or drink during application and handling period.
	P 273	Avoid release to the environment includes drains, sewage and waterways, and atmosphere.
	P 280	The wearing of protective clothes with gloves, vapour mask, face and eye protection during application and handling period.
Response	P 301, 310	If swallowed, rinse the mouth water immediately. Contact the Poisons Information Centre (Telephone 13 11 26) urgently.
	P 303, 313, 362	If on skin or hair, wash all exposed area with plenty of warm water and soap. Seek medical advice if any irritation occurs. Remove all contaminated clothing immediately.

	P 304, 313	If inhaled, removed oneself to fresh air from the contaminated area and keep warm in a comfortable position. Seek medical advice if any symptoms immediately
	P 305, 313	If in eyes, immediately flush with plenty of water. Remove contact lenses if safe to do so if worn. Contact urgent medical advice immediately if any irritation or blurring occurs.
	P 306, 362, 363	If splashed onto clothing, removed all contaminated clothing and wash with plenty of water immediately before reuse
	P 370, 372, 375	If case of fire, use dry sand or earth, or alcohol resistant foam. Containers may explode on heating. If safe to do so, remove all electrical equipment in the direction of fire. Ensure all power supplies are switch off.
	P 380, 381	Consider evacuating the area if the fire presents a threat. Eliminate all ignition sources if safe to do so.
	P 390, 391	Collect and absorb all spillages onto dry sand or earth and placed into clean, dry and labelled containers prior to disposal.
Storage	P 402, 403	Store in a cool, well dry and ventilated place in a Flammable Goods Store and away from direct sunlight.
Disposal	P 501	Dispose carefully unused contents and container(s) to an approved waste disposal site. Further information may be obtained by contacting the Local Statutory Authorities. Ensure all package(s) are labelled as PAINT, U.N 1263, CLASS 3, HAZCHEM 3[Y]E

**Product Usage.**

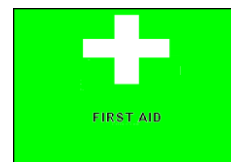
HICHEM Hammercoat is quick drying enamel when applied by spray yields an attractive metallic hammered finish on metallic surfaces. For further information contact HICHEM helpdesk. Telephone 03 9796 3034.

**IDENTIFICATION of the SUBSTANCE(S) and COMPOSITION**

<i>Product Name</i>	HAMMERCOAT – COLOUR RANGE	<i>Code</i>	HC
<i>Name</i>	<i>CAS Number</i>	<i>Proportion w/w</i>	
Toluene	108 – 88 – 3	19.0 – 21.0 %	
Coloured Pigments	Proprietary	0.5 – 1.0 %	
Polymeric Synthetic Resins	Proprietary	33.0 – 37.0 %	
Xylene	1330 – 20 – 7	27.0 – 29.0 %	
Solvent Naphtha (Petroleum) Light Aliphatic	64742 – 89 – 8	6.0 – 8.0 %	
Ethyl Benzene	100 – 41 – 4	6.0 – 8.0 %	
Hexane	110 – 54 – 3	2.0 – 3.0 %	

### FIRST AID MEASURES

<b><i>Inhalation</i></b>	If the operator feels drowsy, dizzy, tired or experiencing headaches, remove the victim away from the contaminated area to the fresh air. Keep the victim warm and quiet until all symptoms subside. If the victim is not breathing, apply artificial respiration immediately away from the contaminated area.
<b><i>Ingestion</i></b>	If swallow, and only if the operator is conscious, give water to drink. <b>DO NOT</b> induced vomiting; seek URGENT medical attention if frothing from the mouth occurs.
<b><i>Eyes</i></b>	If splashed into eyes, hold eyelids apart, and flush the eyes continuously with running for at least 15 minutes. Continue flushing until advised by a doctor.
<b><i>Skin and Hair</i></b>	If skin and hair contact occurs, remove contaminated clothing, and wash thoroughly with soap and plenty of water. Continue flushing until advised by a doctor.
<b><i>First Aid Facilities</i></b>	Clean Water Supply, soap or skin cleaner, barrier cream, emergency showers and eye wash stations.
<b><i>Advice to Doctor</i></b>	If poisoning occurs, consult with the Poisons Information Centre {Telephone <b>13 11 26</b> }. Have a copy of this safety data sheet or label available. Treat symptomatically as symptoms may be delayed for several hours after exposure.



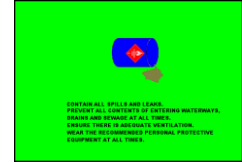
### FIRE FIGHTING MEASURES

<b><i>Extinguishing Media and Requirements</i></b>	Carbon Dioxide {CO <sub>2</sub> }, alcohol resistant foam, dry chemical or water spray. <b>DO NOT</b> use water jets. Bund area with sand to prevent run – off entering waterways, sewage and drains.
<b><i>Hazardous Decomposition Products</i></b>	On heating, containers may rupture and explode: contents may burn rapidly forming toxic gases including carbon monoxide, soot and smoke, above the boiling point
<b><i>Flammability</i></b>	Highly Flammable Liquid. Flash Point = 4 ° Celsius
<b><i>Specific Hazards</i></b>	Vapours may form explosive/air mixtures.
<b><i>Precautions in connection with Fire</i></b>	Fire – fighters should wear Chemical Splash Suit with attached Self – Contained Breathing Apparatus incorporating an Organic Vapour Respirator and gloves. Evacuate all non fire–fighting personnel away from the area. Turn off all electricity and power supplies. Keep containers cool with water spray or water to prevent rupture or burning. Move away all packages and equipment from the direction of the fire, if safe to do so Keep upwind.



### ACCIDENTAL RELEASE MEASURES

<b>Emergency Procedures.</b>	Contain all spills and leaks. Avoid contamination with spilt material on surfaces or entering waterways, drains and sewage. Remove all sources of ignition and <b>NO SMOKING</b> . Wear the recommended full body impervious clothing, gloves and breathing apparatus as per AS– NZ 1715/16. Keep upwind. Absorb all spilt contents onto sand or earth.
<b>Spills and Leaks</b>	
<b>Disposal</b>	Collect all residues into labelled and sealed containers for disposal via special waste collection services as per local Statutory Authority requirements.
<b>Other Precautions</b>	Ensure there is adequate ventilation at all times during the cleaning up period.



### HANDLING and STORAGE

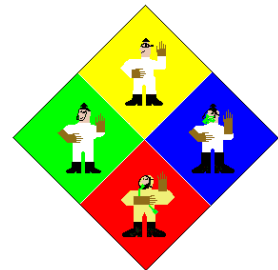
<b>Precautions for Safe Handling</b>	Highly Flammable Liquid. Remove all sources of ignition. Wear the recommended Personal Protective Equipment including organic vapour respirator, eye/face protection, protective clothing, gloves and enclosed footwear. Ensure there is adequate ventilation at all times. After use, before eating, drinking or smoking, wash all exposed skin and hair with soap and water.
--------------------------------------	--------------------------------------------------------------------------------------------------------------------------------------------------------------------------------------------------------------------------------------------------------------------------------------------------------------------------------------------------------------------------------

### EXPOSURE CONTROLS for 8 hours

<b>Exposure Standards</b>	Xylene = 350 milligram/cubic metre
<b>MAK</b>	Solvent Naphtha (Petroleum) Light Aliphatic = 100 milligram/cubic metre
	Hexane = 72 milligram/cubic metre
	Toluene = 190 milligram/cubic metre
	Ethyl Benzene = 435 milligram/cubic metre

### PERSONAL PROTECTION

<b>Inhalation</b>	The wearing of Organic Vapour – Particulate Respirator <b>should be</b> worn at all times during the application and handling period.
<b>AS –NZS 1715/16</b>	
<b>Eye</b>	The wearing of safety glasses fitted with side shields <b>should be</b> worn at all times during the application and handling period. Do not wear contact lenses.
<b>AS –NZS 1337</b>	
<b>Gloves</b>	The wearing of Neoprene or PVC gloves <b>should be</b> worn at all times during the application and handling period.
<b>AS –NZS 2161</b>	
<b>Footwear</b>	The wearing of enclosed footwear <b>should be</b> worn at all times during the application and handling period.
<b>AS –NZS 2210</b>	
<b>Clothing</b>	The wearing of anti–static clothing made on natural or synthetic high temperature fibre <b>should be</b> worn at all times during the application and handling period.
<b>AS –NZS 2919</b>	
<b>Hearing</b>	Not required
<b>AS –NZS 1270</b>	
<b>Other Requirements</b>	Avoid contact with eyes and skin at all times. Avoid inhaling vapours.



**PHYSICAL – CHEMICAL PROPERTIES**

<b>Appearance</b>	A coloured liquid with a mild odour.	
<b>pH</b>	Not required.	
<b>Vapour Pressure</b> <i>(Butyl Acetate = 1)</i>	Greater than 1	
<b>Boiling Point °C</b>	< - 5 to 140 ° Celsius	
<b>Density</b>	0.87	
<b>Solubility in water</b>	Immiscible	
<b>Flash Point °C</b>	< - 5 ° Celsius (literature value)	
<b>Flammability</b>	Lower Explosive Limit = 1.0	Upper Explosive Limit = 10.8
<b>Limits</b>		
<b>Auto Ignition °C</b>	250 ° Celsius (literature value)	
<b>Volatile Organic Compounds VOC</b>	58.0 % volume/volume	
<b>Volatile Components</b>	Liquid Hydrocarbons.	

**STABILITY and REACTIVITY**

<b>Chemical Stability</b>	Stable under normal conditions of use.
<b>Conditions to avoid</b>	Avoid contact with heat and all ignition sources.
<b>Hazardous decomposition products</b>	On heating, containers may rupture and explode: contents may burn rapidly forming toxic gases including carbon monoxide, nitrogen oxides, soot and smoke.
<b>Incompatible materials</b>	Incompatible with strong oxidizing agents
<b>Hazardous Reactions</b>	Will not polymerize.

**TOXICOLOGICAL INFORMATION**

<b>Ingredient</b>	<b>Inhalation</b> <i>LC<sub>50</sub>(rat)</i>	<b>Dermal</b> <i>LD<sub>50</sub>(rabbit)</i>	<b>Oral</b> <i>LD<sub>50</sub>(rat)</i>
Solvent Naphtha (Petroleum) Light Aliphatic	20 mgm/Litre	2000 mgm/kgm	2000 mgm/kgm
Xylene	20 mgm/Litre	4500 mgm/kgm	2820 mgm/kgm
Hexane	20 mgm/Litre	2000 mgm/kgm	2000 mgm/kgm
Ethyl Benzene	20 mgm/Litre	15500mgm/kgm	3500mgm/kgm
Toluene	29 mgm/Litre	12200 mgm/kgm	5580 mgm/kgm

Acute Inhalation Toxicity	Low toxicity. High concentrations may cause central nervous system depression resulting in headaches, dizziness and nausea; continued inhalation may result in unconsciousness and/or death.
Acute Dermal Toxicity	Low toxicity.
Acute Oral Toxicity	Low toxicity. Aspiration into lungs when swallowed or vomited may cause chemical pneumonitis which may be fatal.

### TOXICOLOGICAL INFORMATION (CONTINUED)

#### Health Effects – Toxicological and Other Health Information

Inhalation	No data available
Ingestion	No data available.
Eyes	If in eyes, may cause other symptoms including burning sensation, redness, swelling and/or blurred vision. Also, may cause decreased in colour perception.
Skin	May have degreasing effect on the skin may result in contact dermatitis. Repeated or prolonged exposure may cause skin dryness and cracking.
Carcinogenic	Not carcinogenic in animal studies
Mutagenic	Not mutagenic in animal studies.
Reproductive	No data available.
Toxicity	

### ECOLOGICAL INFORMATION

<b>Environment</b>	May cause long lasting harmful effects in the aquatic environment.
<b>Persistence/ Degradability</b>	No data available.
<b>Mobility</b>	No data available
<b>Environment Protection</b>	Not Known



### DISPOSAL CONSIDERATIONS

Collect all residues and placed into labelled and sealed containers. Do not incinerate empty containers after use. Dampen all unwanted cloths and rags in water prior to disposal. Do not recycle contents. Crush all small empty containers. Large containers and drums may be sent to an approved drum recycler. Ensure all contents do not pollute waterways, drains and sewage

### TRANSPORT INFORMATION

<b>UN number</b>	1263		
<b>Proper Shipping Name</b>	PAINT		
<b>Class</b>	3	<b>Subsidiary Risk</b>	Not Required
<b>Packing Group</b>	II		
<b>Emergency Procedures</b>	EP 3300	<b>Initial Emergency Response Guide</b>	14
<b>HAZCHEM</b>	3[Y]E		
<b>IMDG</b>	Not Known		



**REGULATORY INFORMATION****Regulatory  
Information and  
Hazard Category  
SUSMP  
Classification**

The product is classified as Hazardous Substance in accordance to SAFE WORK AUSTRALIA {HSIS} and Globally Harmonised System as Harmful and Irritant.

Classified as a Schedule S 5 Poison.

**OTHER INFORMATION****Emergency  
Contact  
Disclaimer**

**Poisons Information Centre 13 11 26**

**HiChem Paint Technologies  
(03) 9796 3400**

*Data provided is to best of HiChem Paint Technologies Proprietary Limited knowledge and believe to be accurate and reliable as of the date of issued. However no expressed or implied warranties are given. HiChem Paint Technologies Proprietary Limited cannot anticipate or control the conditions under which this information may be used. Therefore, it is user's responsibility to satisfy themselves as to the suitability and completeness of such information for their particular use. It is the responsibility of the user to ensure that the issue is current. This information given is a non-controlled document*



Version 2.0  
HIGH 7745  
August 2015