



# Guide to Waterproofing *Solutions* for interior and exterior use



Excessive moisture in basements and foundation walls can cause significant problems including structural decay, high humidity levels and mold and mildew growth.

Your basement is wet.

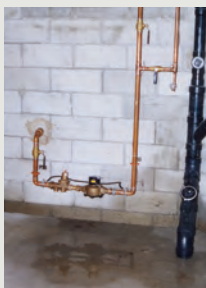
# What now?

**Active water leaks, such as from pipes, can cause:**

- Structural decay to walls, footings and foundations.
- Costly and disruptive repairs.
- A decrease in home value if not corrected.

**Wet basement walls can result in high humidity levels throughout the house.**

- Water trapped between the soil and outside foundation wall is absorbed through concrete and masonry.
- Walls become chronically damp.
- Basements become cold and clammy - musty odors develop.



**Even small amounts of water or moisture can create conditions for mold & mildew growth.**

- Mold & mildew thrive on moisture and feed on organic materials, including ordinary paint and the dust and dirt that collect on surfaces over time.
- Foul-smelling and unattractive, mold & mildew will eventually destroy painted surfaces which allows moisture to penetrate and finally cause masonry to crumble.

## 3 STEPS

to Waterproofing with Watertite

# Surface PREPARATION

1

### CLEAN THE SURFACE

to remove dirt, mold or other contaminants.

- Remove efflorescence (a powdery white deposit found on many concrete surfaces)



with **WATERTITE®**  
**ETCH and CLEANER**

ideal for use on cement, stone, tile, brick and other masonry.

- Prepares concrete for painting.
- Safer than muriatic acid – a highly corrosive liquid.



- Follow directions and safety precautions on package.
- Rinse thoroughly with water. Allow excess water to evaporate.

### REMOVE MOLD & MILDEW

- Interior – clean with a solution of bleach and water – 1 cup bleach to 1 gallon of water.
- Exterior – Use **JOMAX® House Cleaner and Mildew Killer**. Next, power wash or sand blast exterior surfaces to remove all loose and scaling paint and cement.



**RESTORE** your home's aluminum siding, vinyl, painted wood and other exterior surfaces with **JOMAX® House Cleaner and Mildew Killer**.

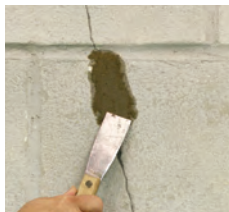
- EPA-registered to kill mold & mildew fast.
- Cleans dirt and stains without damage to existing finish.
- Easy to apply, without scrubbing or power washing.
- Unlike bleach, it won't damage home or surrounding plants, grass and shrubs.

# Surface

## PATCH & REPAIR

### 2 PATCH & REPAIR WATER LEAKS & CRACKS

- Use **WATERTITE® HYDRAULIC CEMENT** to patch all holes and cracks, especially active water leaks.
- To stop active and non-active water leaks, seal the joint where the floor and wall meet with **WATERTITE® POLYURETHANE SEALANT**.
- Follow directions on product label for proper application methods and dry time.



Quick-setting **WATERTITE Hydraulic Cement** expands as it dries to fill active and non-active water leaks in concrete walls and foundations.

- Use for patching or anchoring.
- Adheres to wet and dry surfaces.
- Fast-acting 15 minute working time.



**WATERTITE Polyurethane Sealant** is suitable for bonding, sealing in expansion joints as well as waterproofing concrete and other masonry materials.

- Permanently flexible joint filler.
- Waterproof.

# Paint Surfaces

## with WATERTITE®

### 3 APPLY WATERPROOFING PAINT

#### WATERTITE® or WATERTITE® LX

#### Mold & Mildew Proof\* Waterproofing Paints

are specially designed to protect your home from the damaging effects of water and wind driven rain. The technologically advanced formula forms an impermeable barrier to water on interior or exterior, vertical or horizontal concrete block.

- WATERTITE or WATERTITE-LX provide an easy, do-it-yourself solution to interior and exterior water damage.
- Backed by extended waterproofing guarantees!

#### WATERTITE® OIL-BASE PAINT

- Can be applied to damp or dry surfaces to take care of water problems immediately.
- Resists 34 lbs. of water pressure.
- Creates a very smooth bright white finish.
- Ultra low odor.
- Tintable to Zinsser's custom colors.
- Easy to apply (brush or roll.)
- Mold & Mildew-Proof\* (5 Year Guarantee.)
- **Lifetime** Waterproof Guarantee.



#### WATERTITE® LATEX-BASE PAINT

- Resists 20 lbs. of water pressure.
- Creates a very smooth bright white finish.
- Ultra low odor.
- Easy to apply (brush or roll.)
- Tintable to Zinsser's custom colors.
- Mold & Mildew-Proof\* (10 Year Guarantee.)
- 15 Year Waterproof Guarantee.
- Also available in quart size - great for bird baths, fish ponds and small projects.



\* These products contain a mildewcide to prevent the growth of mold & mildew on the paint film only.

# How to

## APPLY WATERTITE

- Use a thick synthetic brush or 1" nap roller for unpainted, porous surfaces and a 3/4" nap roller for smooth or previously painted, non-glossy surfaces.
- WATERTITE or WATERTITE-LX waterproofing paint is a two coat system.
- Liberally apply the first coat using either a brush or roller. Make sure to work the paint into the pores of the masonry to fill all the pin holes. Do not over spread.



- Wait two to three hours before recoat and/or topcoat.
- WATERTITE and WATERTITE-LX can be top coated with latex, oil-base or epoxy coatings.

---

### *Note...*

Existing mold & mildew must be removed before painting. If you are concerned about mold & mildew behind walls, underneath flooring, in ventilation systems or other unseen areas, contact a professional who specializes in mold & mildew remediation.

Maintaining low moisture around your home helps to prevent the growth of mold & mildew.

# Control moisture

## *interior*

### Things you can do:

- Repair leaks from plumbing or structural damage that can cause moisture to collect indoors.
- Be sure to fix overflows from tubs, sinks, showers, washing machines, storm damage to shingles or siding, leaky windows, doors & sills, clogged gutters and downspouts.
- Airflow should be kept constant. This can be done in a variety of ways:
  - Exhaust fans control moisture in high humidity spots like bathrooms.
  - Replace solid wood doors with louvered doors or vents for better air circulation.
  - Dehumidifiers collect excess moisture. and keep wet areas dry.



## *exterior*

### Things you can do:

- Keep shrubs, plantings and mulch away from exterior walls.
- Clear gutters and drains of leaves and debris; repair any exterior leaks, as necessary.
- Redirect sprinklers and rotate hanging planters to prevent water from regularly collecting on exterior surfaces.
- Make sure rain water is not collecting near your home's foundation.
- Extend downspouts away from the foundation.
- Fill in low spots with gravel and soil, if necessary.



*Don't forget...*

PERMA-WHITE®  
Mold & Mildew-Proof™  
Interior & Exterior  
Paints outperform  
the competition!

The PERMA-WHITE  
formula - which combines  
a unique, proprietary resin  
system with EPA registered  
mildewcides and other  
ingredients - has proven so effective in  
preventing the growth of mold & mildew  
on the paint film, it sets the standard for  
mold & mildew prevention.

That's why for more than a decade,  
PERMA-WHITE has been used in homes,  
schools, hotels - and other real world  
environments where the growth of mold  
& mildew is a concern.



## *Guaranteed!*

We're so confident in its performance, we back  
it with our 5-Year Mold & Mildew-Proof Paint  
Film Guarantee.

---

## *Need help?*

If you need more information about  
mold & mildew, visit [www.rustoleum.com](http://www.rustoleum.com)  
or call us at (800) 323-3584.

Contact your insurance carrier,  
contractor, local building department,  
or disaster relief agency for more help.  
A mold specialist can detect mold in  
unseen places and on other types of  
surfaces.

 **RUST-OLEUM**  
CORPORATION

11 Hawthorn Pkwy., Vernon Hills, IL 60061

800-323-3584

An **RPM** Company

©2013 Rust-Oleum CORP ORati On

274125 0813